

## 14.5 Visual Baseline

### 14.5.1 Designated Scenic Routes and Views

As reported previously in the Landscape Baseline, 10 no. scenic routes and 7 no. scenic viewing points in Co. Tipperary were identified within the LVIA Study Area. Of these, 1 no. (T-SR20) is within 5km of the proposed turbines, see Section 14.5.7 Visual Receptors Preliminary Analysis.

In addition, 1 no. scenic drive in Co. Limerick was identified within the LVIA Study Area, located 18.5km from the proposed turbines, see Section 14.5.7 below.

### 14.5.2 Secondary Amenity Areas

As reported previously in the Landscape Baseline, 2 no. Co. Tipperary “Secondary Amenity Areas” (TCDP 2022-2028) designated for their “*scenic and visual quality*” were identified in the LVIA Study Area and one is scoped in for assessment in the LVIA as a visual receptor.

- **Slievephelim Complex:** Contains all proposed turbines. There will be visibility of the proposed turbines within 5km and none to limited visibility to the north and beyond 5km.

### 14.5.3 Rock of Cashel Historical Site

The Rock of Cashel, a nationally renowned historical site with high archaeological value is located within the LVIA Study Area, approximately 14.7km from the proposed turbines and has full theoretical visibility according to ZTV mapping. Two types of views are assessed in this LVIA with respect to the Rock of Cashel: views from the historic site itself and views towards the Rock of Cashel within its wider landscape setting.

### 14.5.4 Popular Recreational and Tourist Destinations

Destinations such as these are considered sensitive receptors from an LVIA perspective because people are likely to utilise or visit the destinations in a recreational capacity and/or specifically to experience landscape views; these include way-marked walking routes, cycle routes, scenic drives/tourist driving routes and Ordnance Survey Ireland (OSi) Viewing Areas.

14 no. recreational destinations and OSi Viewing Areas were identified in the LVIA Study Area; these are named below and detailed in the next Section 14.5.7 Visual Receptors Preliminary Analysis. Of these, 1 no. way-marked walking trail, the Multeen Way, passes within 5km of the proposed turbines:

- Keeper Hill Summit (highest elevation point in the LVIA Study Area),
- Multeen Way,
- Knockalough Loop,
- Kilcommon Pilgrim Loop,
- Birchill Loop,
- Ormon Way,
- Upperchurch – Éamonn an Chnoic Loop,
- Co. Tipperary Heritage Way,
- Ballyhoura Way,
- Slieve Felim Way,
- Murroe – Glenstal Woods Loop,
- OSi Viewing Areas (3 no.).

## 14.5.5 Settlements

According to the settlement hierarchies reported in the TCDP 2022-2028 and LDP 2022-2028, 17 no. settlements are located within the LVIA Study Area. No Key Towns or District Towns are within 10km of the proposed turbines. Thurles (Key Town), Cashel (District Town) and Co. Tipperary Town are within 15-20km of the proposed turbines and have full or partial theoretical visibility of the proposed turbines; see next Section 14.5.7 Visual Receptors Preliminary Analysis.

## 14.5.6 Primary Transport Routes

Onsite visibility appraisal determined that most visibility of the proposed turbines will occur within 3-5km of the Proposed Wind Farm site from the local road network surrounding the proposed turbines, and there is also potential for visibility to occur for users of R497, R661 and R505 Regional Roads where they pass within 5km of the site. A number of additional regional roads, as well as national roads and the M8 Motorway pass within the LVIA Study Area and are considered in the preliminary analysis.

## 14.5.7 Visual Receptors Preliminary Analysis

### 14.5.7.1 Visual Receptors Scoped In

The following receptors identified in the LVIA Study Area were scoped in for assessment in the LVIA and are mapped below in Figure 14-11 ZTV and Visual Baseline Map with Viewpoints; see the full detailed methodology in *Appendix 14-1: LVIA Methodology* for the analysis of scoping receptors in and out of assessment.

Table 14-9 Visual Receptors Scoped in for Assessment in the LVIA

Receptor	Description	Theoretical Visibility	On-site Visibility Appraisal	Scoped In
<b>0 to 5km</b>				
Designated Scenic Route	T-SR20: Views in all directions from Ironmills to Milestone Road (R497).	None to Full.	Potential in small areas at the west end of the route.	Yes.
Designated Amenity Area	Slievephelim Complex: Designated "Secondary Amenity Area" containing all proposed turbines.	Full.	Limited to the north beyond 5km.	Yes.
Dundrum	Settlement (Service Centre).	Partial.	Potential at some locations in the settlement.	Yes.
Multeen Way	Waymarked walking trail traversing a linear walking route from Milestone to Co. Tipperary town.	Full.	Potential at high-elevation locations along the trail.	Yes.

Receptor	Description	Theoretical Visibility	On-site Visibility Appraisal	Scoped In
Transport Routes	R497, R505, R661 Regional Roads.	Partial to Full.	Potential for visibility from these routes.	Yes.
<b>5 to 15km</b>				
Designated Scenic Route	T-SR33: Views south along road R505 at Drehideenglashanatooha Bridge.	Full.	Potential at locations along the scenic route.	Yes.
Designated Scenic View	T-V07: Views from N74 at Deerpark, Cashel.	Full.	Potential at this viewing location.	Yes.
Rock of Cashel	Historic/Archaeological site.	Full.	Potential for visibility from the site and surrounding landscape.	Yes.
Holycross	Settlement (Service Centre).	Full.	Potential from elevated locations.	Yes.
Boherlahan	Settlement (Service Centre).	Full.	Potential at some locations.	Yes.
Golden	Settlement (Service Centre).	Full.	Potential at some locations.	Yes.
Limerick Junction	Settlement (Service Centre).	Full.	Potential at some locations.	Yes.
Ballyhoura Way	Way-marked walking trail traversing Ballyhoura Mountains, Benyvoughella Hill, Slievereagh Hill, Slievenamuck ridge, overlooking the Glen of Aherlow.	Full.	Potential from the portion of this route within the LVIA Study Area.	Yes.
Transport Routes	R639, R660, R688 Regional Roads. N24, N74 National Roads. M8 Motorway.	Full.	Potential visibility.	Yes.

Receptor	Description	Theoretical Visibility	On-site Visibility Appraisal	Scoped In
<b>15 to 20km</b>				
Designated Amenity Area	Glen of Aherlow: Designated “Secondary Amenity Area” in the southern portion of the study area.	Full.	Potential visibility from one small portion of this amenity area.	Yes.
Thurles Town	Key Town.	Full.	Potential at locations on the outskirts of town.	Yes.
Cashel	District Town.	Full.	Potential at some locations.	Yes.
Co. Tipperary Town	District Town.	None to Full.	Potential is limited to high-elevation areas on the outskirts of town.	Yes.
Pallasgreen	Large Village in Limerick.	Full.	Potential at some locations.	Yes.

### 14.5.7.2 Visual Receptors Scoped Out

In some cases, specific receptors are scoped out where there is no potential for significant visual effects to occur on account of combination of factors such as distance, visual screening, direction of views and the nature and sensitivity of the receptors at a particular location.

Table 14-10 Rationale for Visual Receptors Scoped Out

Receptor	Description	Rationale for Scoping Out
<b>Up to 10km</b>		
Designated Scenic Route	T-SR55: North and south of the R503 from Newport to Ballycahill.	No theoretical visibility along most of the route. No potential visibility due to distance from the site and degree of roadside screening.
Settlements	Hollyford	No theoretical visibility.
	Cappagh White, Doon	Some areas of theoretical visibility. No potential visibility due to the vegetation and infrastructure screening from within the settlements.

Receptor	Description	Rationale for Scoping Out
Recreational Trails	Knockalough Loop: Loop walking route through Knockalough Forest.	No theoretical visibility.
	Kilcommon Pilgrim Loop: Old mass paths leading to the church in Kilcommon village, traverses the Bilboa River valley and lower slopes of Mauherslieve Mountain with views of Co. Tipperary and Limerick countryside.	
Transport Routes	R503, R507, R663, R664, R662, R692 Regional Roads.	No potential visibility owing to the degree of roadside screening and/or distance from the site.
<b>Beyond 10km</b>		
Designated Scenic Routes and Views	T-SR56: East and west of the R497.	These protected scenic routes have no theoretical visibility according to ZTV mapping.
	T-SR54: Views from the R498 from Bouladuff through Borrisoleigh.	
	T-S14: Views to Galtees and Slievenamuck along Bansha - Lisverlane road (R663).	
	L-SR1: Designated scenic route in Co. Limerick from Murroe through Glenstal Woods, Woodstock and Ashroe.	
	T-V01: View towards the Rock of Cashel from Dundrum Road.	These protected scenic views are directed away from the proposed turbines.
	T-V02: View towards the Rock of Cashel from Ardmayle Road.	
	T-V03: View towards the Rock of Cashel from Boherlahan Road.	
	T-V04: View towards the Rock of Cashel from Dublin Road.	
	T-V05: View towards the Rock of Cashel from Dualla Road.	
	T-SR35: Views of the Comeragh Mountains looking south on the R639 from Cashel.	
T-SR34: Views to the south and south-east from Shronell crossroads (R515).		
T-SR25: Views along road from Co. Tipperary Town - Kilshane (N24).	While these protected scenic routes have some areas of theoretical visibility,	

Receptor	Description	Rationale for Scoping Out
	T-SR15: Views to Galtees along Ballyglass - Newtown Road (R664).	on-site visibility appraisal determined that there is no potential visibility due to distance from the site and degree of roadside screening.
Designated Amenity Areas	Secondary Amenity Area - Devil's Bit Mountain.	No theoretical visibility.
	Primary Amenity Area - Galtee Mountains.	These designated amenity areas have very small portions of area with theoretical visibility. On-site visibility appraisal determined that potential visibility is unlikely due to the distance from the site and nature of dense vegetation throughout the areas.
	Secondary Amenity Area - Glen of Aherlow.	
	Secondary Amenity Area - Slieveardagh Hills.	
Settlements	Oola, Borrisoleigh, Cappamore.	No theoretical visibility.
	Bansha, Nicker.	Some areas of theoretical visibility. No potential visibility due to the vegetation and infrastructure screening from within the settlements.
OSi Viewing Areas	OSi No.164 near Cooneen Hill.	No theoretical visibility at any of the viewing areas. None of the viewing areas are directed towards the proposed turbinesproposed turbines.
	OSi No.140 near Upperchurch.	
	OSi No.91 near Newtown.	
Recreational Trails and Destinations	Keeper Hill Summit.	While this highest point in the study area has theoretical visibility, there is no potential for significant impact on the views owing to the great distance (18.8km) from the proposed turbines and the nature of wide sweeping panoramic vistas which are not significantly impacted at this distance.
	Birchill Loop: Traverses through the townlands of Rosmult, Roskeen and Rossoulty.	Some areas of theoretical visibility. No potential visibility due to the screening by localised landform undulations.
	Co. Tipperary Heritage Way: 56km walking route following the River Suir from the Knockmealdown Mountains towards the historic town of Cashel.	Some areas of theoretical visibility. No potential visibility due to screening by dense vegetation along the river banks.
	Ormond Way: Linear walking route from Milestone to Portumna.	No theoretical visibility.
	Upperchurch – Éamonn an Chnoic Loop: Loop walking trail through farmland.	

Receptor	Description	Rationale for Scoping Out
	Slieve Felim Way: 43km walking route Limerick and Co. Tipperary, including Murroe foothills, Slieve Felim (422m), Keeper Hill (694m) and Silvermine Mountains (475m).	
	Murroe – Glenstal Woods Loop: Trail through Glenstal Woods circling the Slieve Felim Mountains with views of Keeper Hill and surrounding countryside.	

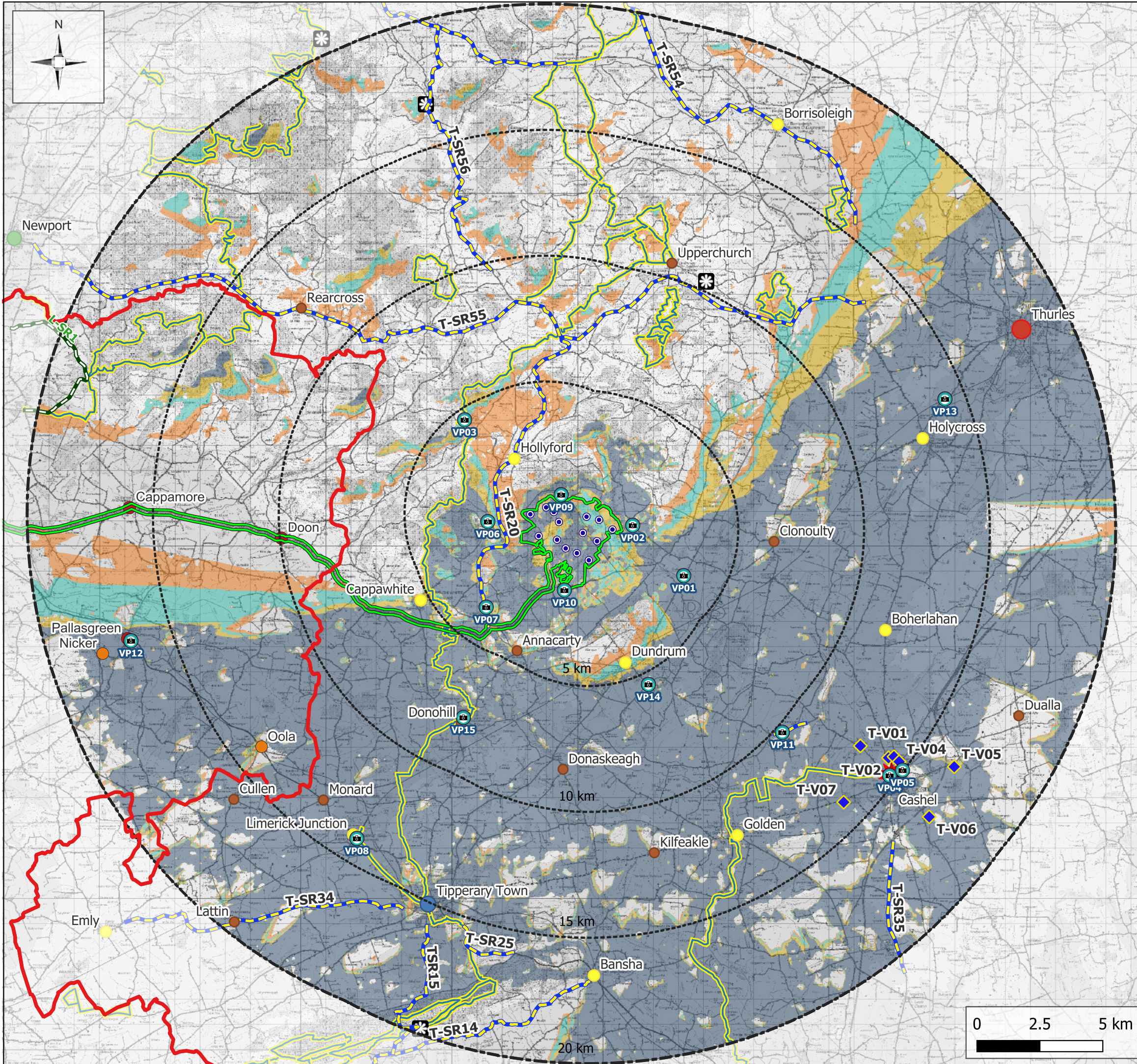
## 14.5.8 Photomontage Viewpoint (VP) Selection

Photomontage imagery was captured at 15 no. viewpoints for full assessment in this LVIA including the assessment of cumulative effects. Photomontages VP01-VP15 represent the most sensitive receptors where open visibility of the proposed turbines occurs and provide a good geographical spread of views surrounding the proposed turbines. All VPs are mapped below in the visual baseline map, Figure 14-11.

Table 14-11 Summary of Viewpoints VP01-VP15

Viewpoint No.	Description	Grid Ref. (ITM)
VP01	<b>R661 Northeast of Dundrum:</b> View from the R661 Regional Road in the townland of Gorteennamona. Located approximately 3.7km south-east of the nearest turbine (T10).	E: 599173 N: 648868
VP02	<b>Glenough Lower:</b> View from the L1284 Local Road in the townland of Glenough Lower. Located approximately 820m east of the nearest turbine (T10).	E: 597145 N: 650868
VP03	<b>Multeen Way near Tooreen:</b> View from the Multeen Way near Tooreen peak, way-marked walking trail on the L5105 Local Road in the townland of Birchgrove. Located approximately 4.6km north-west of the nearest turbine (T07).	E: 590463 N: 655059
VP04	<b>Rock of Cashel:</b> View from the Rock of Cashel in the townland of St. Patricksrock. Located approximately 14.7km south-east of the nearest turbine (T12).	E: 607355 N: 640928
VP05	<b>Setting of Rock of Cashel:</b> View from the L5409 Local Road in the townland of Palmers Hill. Located approximately 15km south-east of the nearest turbine (T12).	E: 607869 N: 641138
VP06	<b>Foilaclug above SR-20:</b> View from the L5108 Local Road in the townland of Foilaclug, situated above Co. Tipperary designated Scenic Route 20. Located approximately 1.7km west of the nearest turbine (T07).	E: 591387 N: 651016
VP07	<b>SR-20 at Drumminacunna:</b> View from Co. Tipperary designated Scenic Route 20 (R497) in the townland of Drumminacunna. Located approximately 3.5km south-west of the nearest turbine (T08).	E: 591323 N: 647614

Viewpoint No.	Description	Grid Ref. (ITM)
VP08	<b>N24 at Limerick Junction:</b> View from the N24 National Road in the townland of Ballykisteen. Located approximately 14.2km south-west of the nearest turbine (T13).	E: 586180 N: 638427
VP09	<b>Glencarbry:</b> View from the L51161 Local Road in the townland of Glencarbry. Located approximately 750m north-east of the nearest turbine (T06).	E: 594301 N: 652082
VP10	<b>Scarrough:</b> View from the L1282 Local Road in the townland of Scarrough. Located approximately 1.5km south-west of the nearest turbine (T12).	E: 594430 N: 648290
VP11	<b>SR-33 at Ballynahinch:</b> View from Co. Tipperary Scenic Route 33 on the R505 Regional Road in the townland of Ballynahinch. Located approximately 10.3km south-east of the nearest turbine (T12).	E: 603092 N: 642644
VP12	<b>Pallasgreen:</b> View from the N24 National Road in the townland of Kilduff. Located approximately 16.7km south-west of the nearest turbine (T08).	E: 577201 N: 646280
VP13	<b>R660 at Beakstown:</b> View from the R660 Regional Road in the townland of Beakstown, representing views from Thurles. Located approximately 14.2km north-east of the nearest turbine (T10).	E: 609557 N: 655888
VP14	<b>R505 at Dundrum:</b> View from the R505 Regional Road in the townland of Dundrum. Located approximately 5.5km south-east of the nearest turbine (T12).	E: 597771 N: 644546
VP15	<b>Multeen Way at Donohill:</b> View from the Multeen Way in the River Suir valley at Donohill village, way-marked walking trail on L4206 Local Road in the townland of Donohill Lands. Located approximately 7.8km south-west of the nearest turbine (T13).	E: 590415 N: 643233



### Map Legend

- County Boundaries
- LVIA Study Area
- EIAR Site Boundary
- Proposed Turbine Locations
- 📷 Photomontage Viewpoint Locations
- Co. Tipperary**
- Co. Tipperary Designated Scenic Routes
- ◆ Co. Tipperary Designated Scenic Views
- Co. Limerick**
- Co. Limerick Views & Prospects
- Co. Tipperary Settlement Hierarchy**
- Key Towns
- District Towns
- Local Towns
- Service Centres
- Local Service Centres
- Settlement Nodes
- Co. Limerick Settlement Hierarchy**
- Large Village
- Small Village
- Recreational & Tourist Destinations**
- ★ Rock of Cashel point
- Way Marked Walking Trails
- ✳ OSi Viewing Points
- Zone of Theoretical Visibility**
- 1-4 Turbines Theoretically Visible
- 5-8 Turbines Theoretically Visible
- 9-11 Turbines Theoretically Visible
- 12-14 Turbines Theoretically Visible

© Ordnance Survey Ireland. All rights reserved. Licence number CYAL50267517

Drawing No.

Figure 14-11

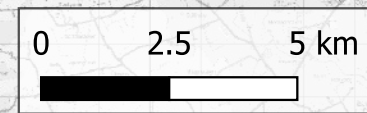
Drawing Title

Visual Baseline & ZTV

Project Title

Carrow Wind Farm

Scale	Project No.	Date	Drawn By	Checked By
1:147,500	231102	04.02.2026	JC	RS



## 14.6 Cumulative Context

### 14.6.1 Wind Farms in the Study Area

Table 14-12 below lists wind farm developments identified within the LVIA Study Area which are included in the photomontage graphics and cumulative impact assessment for this LVIA; these are mapped below in Figure 14-12.

Table 14-12 Cumulative Wind Farms identified in the LVIA Study Area

Cumulative Wind Farm Name	Status	No. of Turbines	Distance to proposed turbines	Hub Height	Tip Height
Glencarbry 1	Existing.	9 no.	632m	85.6m	126.6m
Glenough	Existing.	14 no.	2.4km	80m	125m
Glencarbry 2	Existing.	2 no.	2.8km	81m	126m
Cappawhite	Existing.	17 no.	2.9km	84m	140m
Turaheen Lower	Existing.	3 no.	3.3km	81.6m	126.6m
Holyford	Existing.	3 no.	3.6km	74.5m	125m
Falleennafinoga	Existing.	2 no.	4.4km	68.3m	109.5m
Garracummer	Existing.	15 no.	4.4km	65m	110m
Mienvee Turbine	Existing.	1 no.	4.7km	55m	81m
Turaheen Upper Turbine	Existing.	1 no.	5.2km	60m	91m
Inchivara Turbine	Existing.	1 no.	7.3km	73.5m	126m
Milestone	Existing.	3 no.	7.5km	73.5m	126m
Upperchurch	Permitted.	22 no.	8.1km	90m	158m
Knockastanna	Existing.	4 no.	8.4km	64.7m	99.95m
Gortnalhalla Turbine	Existing.	1 no.	12.5km	70m	99m
Templederry	Existing.	2 no.	18.4km	65m	100.5m
Kill Hill	Existing.	17 no.	18.9km	80.5m	121.5m
Curraghgraique 1	Existing.	3 no.	19.9km	49m	75m
Curraghgraique 2	Existing.	3 no.	20.0km	49m	75m
Brittas	Proposed.	10 no.	20.0km	105.5m	180m

**Existing** wind energy developments are currently operational in the baseline landscape at the time of conducting this LVIA. **Permitted** wind energy developments are either under construction or permitted (consented) at the time of conducting this LVIA; these developments have a high probability of being operational in a future receiving landscape. **Proposed** wind energy developments are well-developed wind farm proposals with project specifications in the public domain at the time of conducting this LVIA. Cumulative effects between the Proposed Project and the development within this category are more uncertain and are reliant on an outcome of the planning and consenting system.

The methodology and rationale for the search process of identifying cumulative wind farms for this LVIA are reported in *Appendix 14-1: LVIA Methodology*. The appendix includes the process for assessment of cumulative landscape and visual effects including how cumulative wind farms are visually presented within the *Photomontage Booklet*.

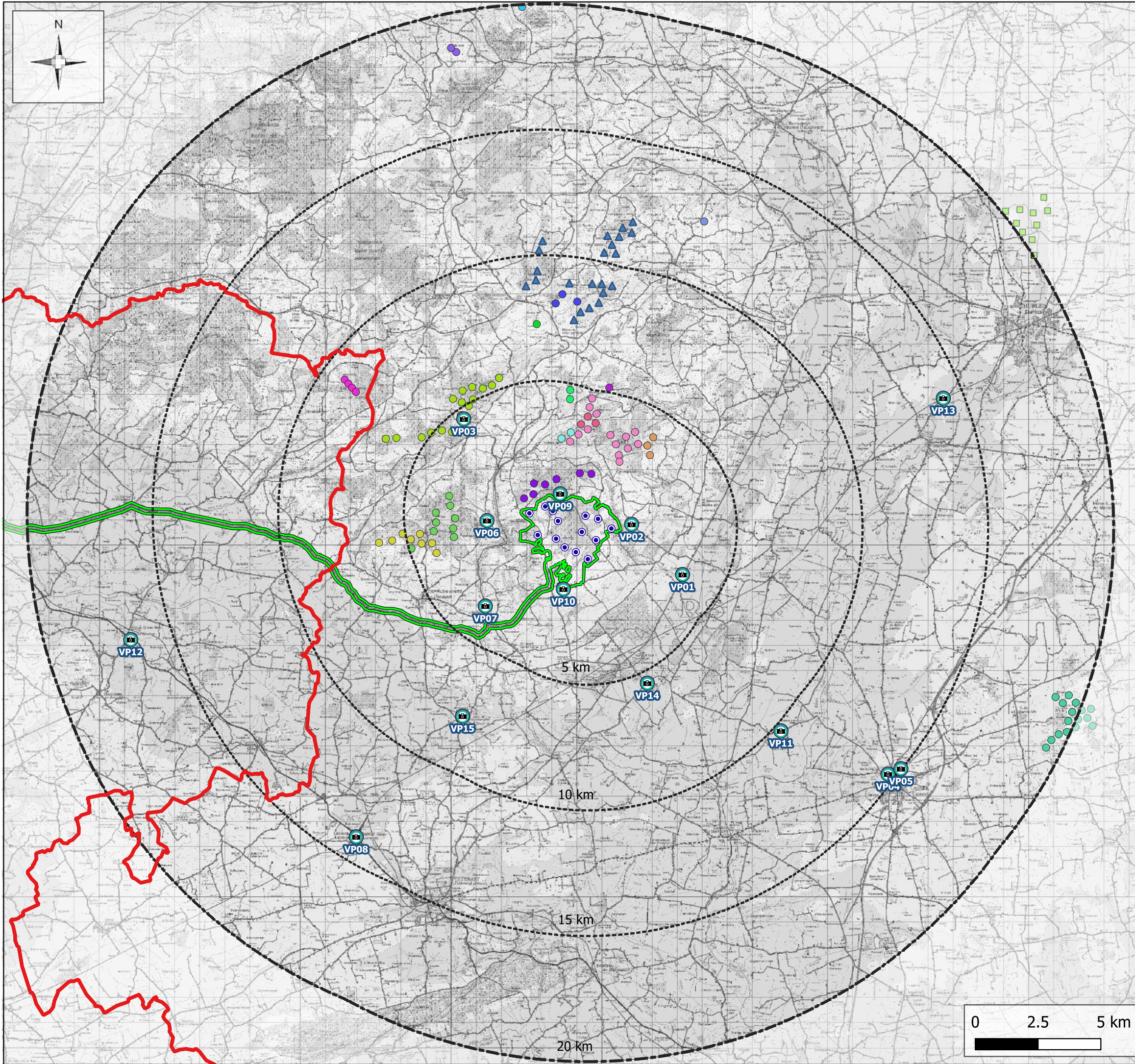
## 14.6.2 Potential for Cumulative Landscape Effects

There is potential for cumulative landscape effects with regard to material impacts within the designated LCA where the Proposed Wind Farm is located, LCA-17a, as the LCA currently contains multiple existing wind farms and the Proposed Wind Farm will be positioned in close proximity to certain developments, particularly Glencarbry 1 Wind Farm within 700m of the nearest proposed turbine. The proposed turbines will contribute to cumulative landscape effects on the character of the overall upland landscape of Slieve Felim Mountains; see all discussions of cumulative effects in Section 14.7.

## 14.6.3 Potential for Cumulative Visual Effects

Figure 14-12 maps all cumulative wind energy developments in the LVIA Study Area and Figure 14-13 indicates the ZTV modelled to indicate areas of “cumulative theoretical visibility” where the proposed turbines would potentially be seen in combination with all other existing, permitted and proposed wind energy developments in the LVIA Study Area, in a bare-ground scenario.

Within 5km of the proposed turbines, there is potential for cumulative visual effects to arise with certain existing developments in close proximity, particularly Glencarbry 1 Wind Farm located on the north aspect of Knockbane peak within 700m of the nearest proposed turbine, as well as with clusters of other nearby developments: Glenough, Turaheen, Glencarbry 2 and Holyford to the northeast, Garacummer and Mienvee to the northwest, and Cappawhite A and B to the west. Beyond 5km of the proposed turbines, cumulative visual effects will arise for views from distant vantage points in the plains and river valleys (including from the Rock of Cashel historical site) where the proposed turbines may be seen to slightly increase the horizontal and/or vertical extent of visible turbines in the background of views, including the permitted Upperchurch Wind Farm which is also located in the Slieve Felim Mountains. The aforementioned wind energy developments are the key focus of cumulative visual impact assessment, supported by photomontages; see all discussions of cumulative effects in Section 14.7.



### Map Legend

- County Boundaries
- LVIA Study Area
- EIAR Site Boundary
- Proposed Turbine Locations
- Ⓜ Photomontage Viewpoint Locations

### Cumulative Wind Farm List

- Existing Cappawhite A Wind Farm
- Existing Cappawhite B - Ext. Wind Farm
- Existing Curraghgraique 1 Wind Farm
- Existing Curraghgraique 2 Wind Farm
- Existing Falleennafinoga Wind Farm
- Existing Garracummer Wind Farm
- Existing Glencarby 1 Wind Farm
- Existing Glencarby 2 Wind Farm
- Existing Glenough Wind Farm
- Existing Gortnahalla Turbine
- Existing Holyford Wind Farm
- Existing Inchivara Turbine
- Existing Kill Hill Wind Farm
- Existing Knockastanna Wind Farm
- Existing Mienvee Turbine
- Existing Milestone Wind Farm
- Existing Templederry Wind Farm
- Existing Turaheen Lower Wind Farm
- Existing Turaheen Upper Turbine
- ▲ Permitted Upperchurch Wind Farm
- Proposed Brittas Wind Farm

© Ordnance Survey Ireland. All rights reserved. Licence number CYAL50267517

Drawing No.

Figure 14-12

Drawing Title

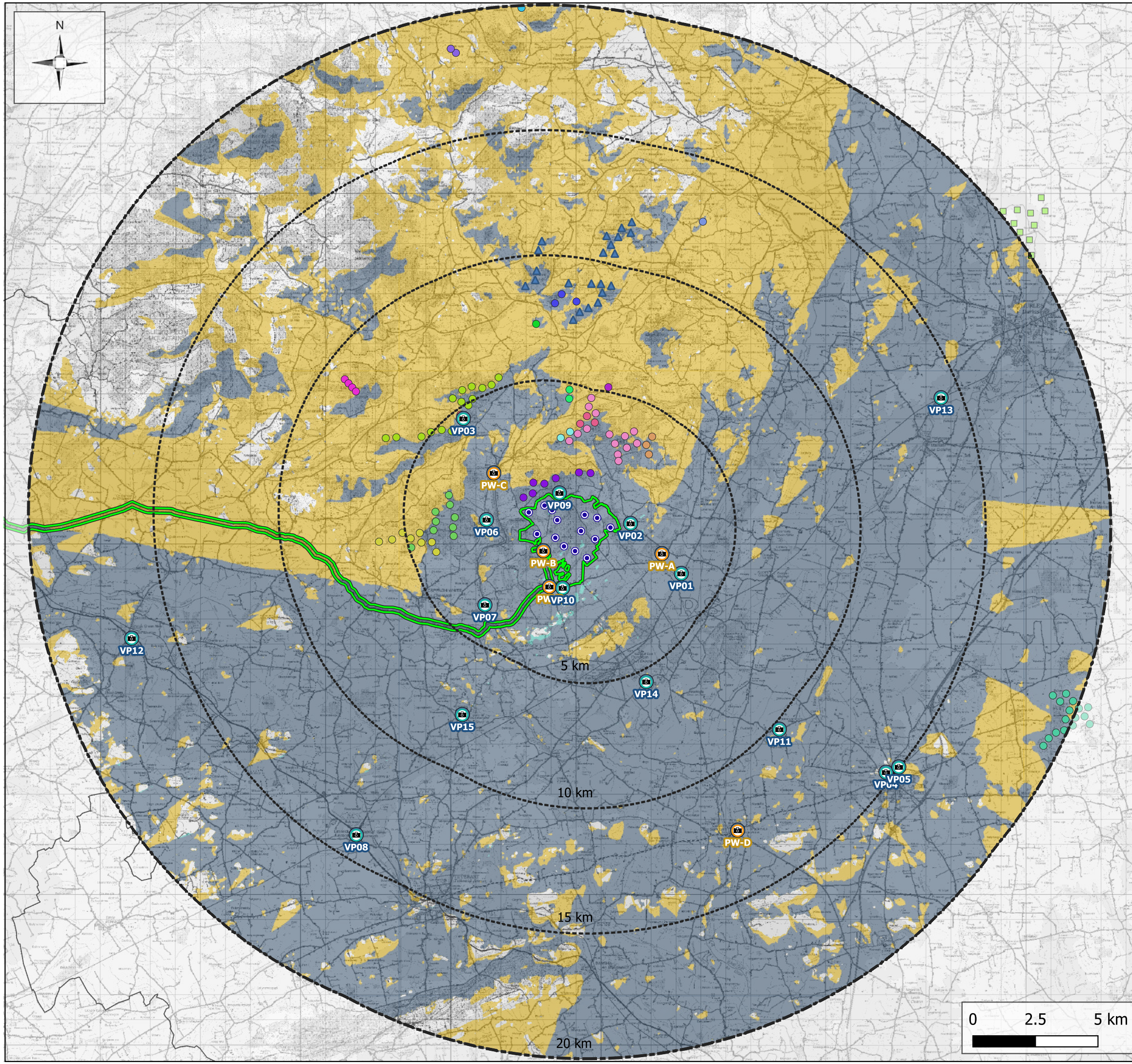
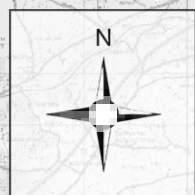
Cumulative Context Map

Project Title

Carrow Wind Farm

Scale	Project No.	Date	Drawn By	Checked By
1:147,500	231102	04.02.2026	JC	RS





### Map Legend

- County Boundaries
- LVIA Study Area
- EIAR Site Boundary
- Proposed Turbine Locations
- Photomontage Viewpoint Locations
- Photowire Viewpoint Locations

### Cumulative Wind Farm List

- Existing Cappawhite A Wind Farm
- Existing Cappawhite B - Ext. Wind Farm
- Existing Curraghgraique 1 Wind Farm
- Existing Curraghgraique 2 Wind Farm
- Existing Falleennafinoga Wind Farm
- Existing Garracummer Wind Farm
- Existing Glencarby 1 Wind Farm
- Existing Glencarby 2 Wind Farm
- Existing Glenough Wind Farm
- Existing Gortnahalla Turbine
- Existing Holyford Wind Farm
- Existing Inchivara Turbine
- Existing Kill Hill Wind Farm
- Existing Knockastanna Wind Farm
- Existing Mienvee Turbine
- Existing Milestone Wind Farm
- Existing Templederry Wind Farm
- Existing Turaheen Lower Wind Farm
- Existing Turraheen Upper Turbine
- Permitted Upperchurch Wind Farm
- Proposed Brittas Wind Farm

### Cumulative Comparative ZTV

- Only Turbines from Proposed Turbines Theoretically Visible
- Only Cumulative Turbines Theoretically Visible
- Both Theoretically Visible

© Ordnance Survey Ireland. All rights reserved. Licence number CYAL50267517  
Drawing No.

### Figure 14-13

Drawing Title  
**ZTV Map of Cumulative Wind Farm Context**

Project Title  
**Carrow Wind Farm**

Scale	Project No.	Date	Drawn By	Checked By
1:147,500	231102	04.02.2026	JC	RS

